

DESIGN

ENGLISH COURSE 'A'

I. Weightage of Learning Objectives :

<i>Objectives</i>	<i>Reading</i>	<i>Writing</i>	<i>Grammar</i>	<i>Literature</i>	<i>Total</i>
<i>% of Marks</i>	25%	15%	22.50%	37.50%	100
<i>Marks</i>	20	12	18	30	80

II. Weightage to typology of questions

<i>Types of Ques.</i>	<i>MCQs/OTQs</i>	<i>VSA</i>	<i>SA-1</i>	<i>SA-II</i>	<i>LA-I</i>	<i>LA-II</i>	<i>Total</i>
<i>Marks</i>	1 mark	1 mark	2 marks	4 marks	6 marks	8 marks	
<i>No. of Ques.</i>	Q. 1,2,5,6, 7,8,9	Q. 10,11	Q.12	Q.3,13	Q.14	Q.4	14
<i>Total Marks</i>	38	8	12	8	6	8	80

III. Weightage to Content :

<i>S.No.</i>	<i>Name of the Unit</i>	<i>Marks</i>
1.	A (Reading) [Q. 1 and 2]	20
2.	B (Writing and Grammar [Q. 3 to Q. 9]	30
3.	C (Literature [Q. 10 to Q. 14]	30
	Total	80

IV. Scheme of options :

Choice in Q. 3, Q. 4, Q. 10, Q. 11, Q. 12, Q. 13 and Q. 14

V. Scheme of Sections :

- Section A (Reading)
- Section B (Writing and Grammar)
- Section C (Literature)

VI. Expected length of answers to different types of questions & Time Management

S. No.	Type of Questions	Expected length of Answer	Expected time for each question/type
1.	MCQs/OTQs	One word/phrase/ correct option	40 minutes
2.	Very Short Answer (VSA)	One sentence	40 minutes
3.	Short Answer (SA-I, SA-II)	SA-I (30-40 words) SA-II (50 words/ 70-80 words)	50 minutes
4.	Long Answer (LA-I, LA-II)	LA-I (100 words) LA-II (100-120 words)	50 minutes

Note: Questions to be framed using the verbs from Bloom's Taxonomy, exploring all the levels from knowledge to creativity!

SAMPLE PAPER-I
CLASS-VIII (2024-25)
ENGLISH (COURSE 'A')

Time allowed : 3 Hours

Maximum Marks : 80

General Instructions :

1. *This paper consists of three sections : A, B and C.*
 2. *Attempt all the questions.*
 3. *Do not write anything on the question paper except your name, class/section and roll number*
 4. *All the answers must be correctly numbered in the answer sheet as per the numbering given in the question paper.*
 5. *Ensure that questions of each section are answered together.*
 6. *Read all the questions carefully and follow the instructions given with each question.*
 7. *Adhere strictly to the word limit given in the question paper.*
-

Section-A (Reading)

(20 Marks)

1. Read the following passage carefully and answer the questions that follow :
(1x8=8)
 - I. In the suburbs, some people live uneventful lives without any reason, just like Rickie. He grew up surrounded by mundane surroundings - the cloudy skies above and the concrete underfoot. His idea of society was limited to the strangers living in identical houses nearby. This dull existence wasn't necessary, but it suited his father, Mr. Elliot.
 - II. Mr. Elliot, a lawyer, shared Rickie's frail appearance, with a weak body, hollow cheeks, and a thinning head of hair. His voice was smooth yet had a hint of cynicism that could make others uncomfortable. His eyes, once unkind and fearful, no longer troubled the world.
 - III. He married a woman with a beautiful voice and a gentle demeanour. Despite initial resistance from his family, they accepted her gracefully.

However, their marriage soon soured due to Mrs. Elliot's inability to create a beautiful home environment. When she bought a carpet that clashed with the room's decor, Mr. Elliot laughed it off, claiming he couldn't stay, and left.

IV. He occasionally visited his family in the suburbs but spent most of his time in his small yet tastefully decorated house in town. Rickie admired his father's refined taste, especially his ability to arrange flowers elegantly in lead frames. Despite his mother's hopes, Rickie only got to help once before he accidentally spilled water on the carpet. Mr. Elliot chuckled at the incident, showing his characteristic nonchalance, and soon stormed out of the house, leaving Rickie to ponder his father's discerning taste.

- (i) Mr. Elliot is described as _____.
- A. boring and self-serving B. mundane and uneventful
C. elegant and refined D. feeble and kind
- (ii) According to the passage, the family's life in the suburbs is described as _____.
- A. dull and chosen for Mr. Elliot's convenience.
B. unwelcoming and Mr. Elliot wants to leave.
C. poor but friendly for Rickie's upbringing.
D. tough on Mrs. Elliot, but she tolerates it for her husband.
- (iii) What led to tension in Mr. and Mrs. Elliot's marriage?
- A. Mrs. Elliot's incapacity to make their home beautiful
B. Mr. Elliot's busy work schedule
C. Financial troubles
D. Interference from family members
- (iv) How did Rickie feel about his father leaving the house abruptly?
- A. Envious B. Confused
C. Angry D. Indifferent

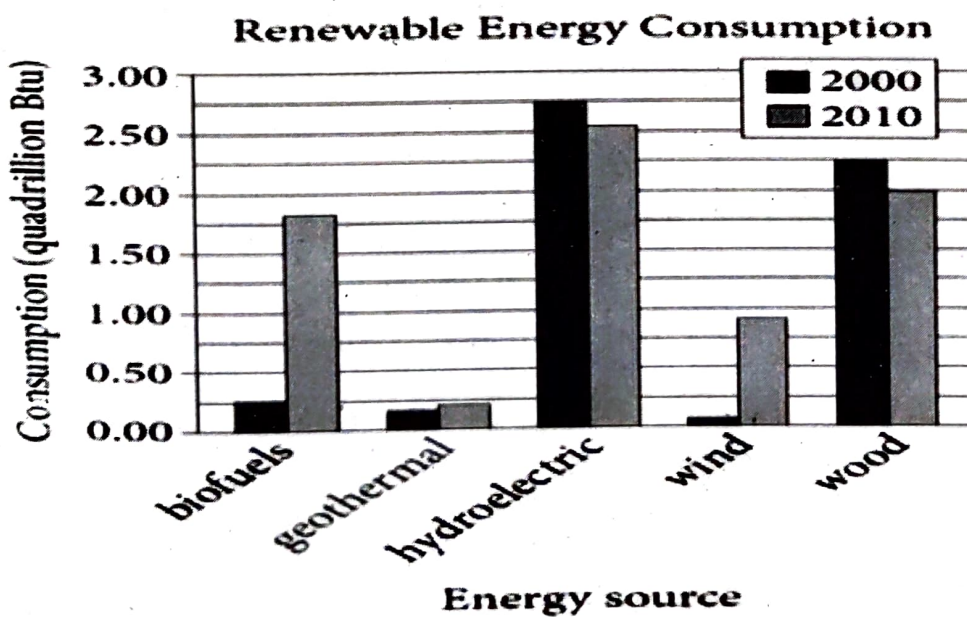
- (v) What is the significance of the description of Mr. Elliot's father's house compared to his own?
- A. Highlights dissatisfaction
 - B. Emphasises aesthetic contrast
 - C. Suggests desire for simplicity
 - D. Indicates urban preference
- (vi) Which word is a synonym for "unexpectedly" in the passage?
- (vii) Complete the given statement by filling the blank:
Rickie admired his father's ability to _____
elegantly.
- (viii) State whether the given statement is **TRUE** or **FALSE**.
Mr. Elliot's departure from his family home was abrupt and unexpected.

2. Read the following passage carefully and answer the questions that follow: (1×12=12)

Renewable Energy: Harnessing Nature's Power

- I. Renewable energy sources are crucial for addressing climate change and ensuring a sustainable future. These sources harness natural processes to generate power without depleting finite resources or emitting harmful greenhouse gases.
- II. One prominent renewable energy source is solar power which harnesses sunlight using photovoltaic cells or solar thermal systems. Photovoltaic cells convert sunlight directly into electricity while solar thermal systems use mirrors or lenses to concentrate sunlight and generate heat which can then be used to produce electricity or heat water.
- III. Another key renewable energy source is wind power which harnesses the kinetic energy of wind to turn turbines and generate electricity. Wind farms, often located in areas with strong and consistent winds, provide a significant and growing share of global electricity production.

- IV. Hydropower, generated from flowing water, is one of the oldest and most widely used forms of renewable energy. It involves capturing the energy of flowing water-such as rivers, streams, or ocean tides-and converting it into electricity using turbines connected to generators.
- V. Biomass energy, derived from organic materials such as wood, crop residues, and organic waste, is another important renewable energy source. Biomass can be burnt directly for heat or converted into biofuels such as ethanol and biodiesel for transportation or electricity generation.
- VI. Geothermal energy, derived from the heat stored beneath the Earth's surface, is a reliable and constant source of renewable energy. It involves tapping into hot water or steam reservoirs deep underground to generate electricity or provide direct heating.
- VII. Investing in and expanding the use of renewable energy sources is essential for reducing dependence on fossil fuels, mitigating climate change, and ensuring a sustainable energy future for generations to come.



(i) According to the passage, what is the author's view on the significance of renewable energy?

- A. Renewable energy as a temporary solution.
- B. Irrelevant to addressing climate change.
- C. Combating climate change and ensuring sustainability.
- D. Too costly to implement effectively.

(ii) The primary methods for harnessing solar energy are _____ and _____.

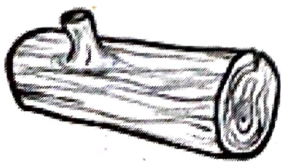
- (a) Wind turbines
- (b) Photovoltaic cells
- (c) Hydroelectric dams
- (d) Solar thermal systems

- A. Option (a) and (b)
- B. Option (b) and (d)
- C. Option (a) and (d)
- D. Option (c) and (d)

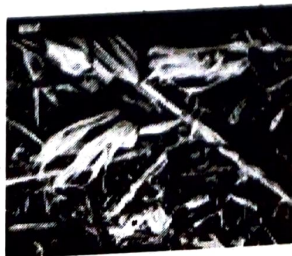
(iii) Which option best describes how solar power contributes to renewable energy generation?

- A. Harnessing wind energy
- B. Converting sunlight into usable electricity
- C. Extracting heat from the Earth's core
- D. Utilising tidal forces

(iv) Choose the correct option that DOES NOT fit in the category of Biomass energy.



Option (A)



Option (B)



Option (C)



Option (D)

(v) Which word from the passage does not align with renewable energy sources?

A. Wind

B. Solar

C. Fossil

D. Biomass

(vi) The following statements are marked as Assertion (A) and Reason (R). Read the statements and choose the correct option.

Assertion: Geothermal energy offers a reliable and consistent source of renewable energy.

Reason: It taps into hot water or steam reservoirs underground for electricity or heating.

A. Both (A) and (R) are True and (R) is the correct explanation of (A).

B. Both (A) and (R) are True and (R) is not the correct explanation of (A).

C. (A) is True but (R) is False.

D. (A) is False but (R) is True

(vii) Complete the given flowchart to describe the process of producing hydroelectricity.



(viii) State whether the following statement is True or False:

The author's tone while discussing the benefits and challenges of renewable energy is balanced and practical. -

(ix) Complete the given analogy (refer paragraph 7)

Window: letting fresh air in :: Renewable energy : _____

(x) Write the antonym of 'destroy' as used in paragraph II.

(xi) Which energy source exhibited a higher consumption level from 2000 to 2010, based on the analysis of the given bar graph?

(xii) Mention two energy resources that show a depletion in consumption according to the given graph.

Section B (Writing and Grammar)

(30 Marks)

3. You are Sonali/ Soham, the head girl/head boy of Golden Leaf Public School, Mumbai. Draft a notice in not more than 50 words informing the students about an Inter School Debate Competition organised by your school. Invent all the necessary details. (4 Marks)

OR

Write an email to your friend describing your favourite hobby and why you enjoy it in not more than 50 words. Include details about how you got started and any memorable experiences you've had while pursuing this hobby. (4 Marks)

4. Rising number of old age homes are a symptom of a societal shift away from caring for our elders within our families. Write a letter to the editor of a leading daily showing your concern about the same and voicing your concern about the need to care for elderly in not more than 120 words. You can take ideas from the Reader Unit -2 'Compassionate Souls'.

OR

(8 Marks)

"Nature is Your Best Teacher" – With this profound quote in mind, write an article discussing the invaluable lessons nature offers and how embracing its teachings can enrich one's life.

Write within a word limit of 100-120 words. You can take ideas from the Reader Unit -4 'Nature'. (8 Marks)

5. The following passage has not been edited. There is an error in each line. Find the error and write the incorrect word and the correction in your answer sheet. The first one has been done as an example. (1×4=4)

	Incorrect	Correct
Modern town planning is overlooked the	is	has
role of waterways on shaping urban development.	(a) _____	_____
As road transport developed, but the motor car	(b) _____	_____
become civilisation's poster boy, inland water	(c) _____	_____
transport suffering economic undesirability	(d) _____	_____
and declined gradually.		

6. Rearrange the following words/phrases into meaningful sentences. (1×4=4)
- (a) exercise/just/doesn't/regular/physical/build muscles/ keep weight/ and/ also helps / in check / it
 - (b) protects memory/ it also/thinking/ and / skills
 - (c) helps improve/ blood vessels/ health/ exercise/ blood / and / flow
 - (d) helps/ with/the activity/ brain cells / of/ and also/ helps reduce/ the risk/ brain inflammation/ of

7. Given below is a set of instructions for making Vegetable Soup. Based on the instructions, complete the following paragraph: (1×4=4)

- Sauté diced onion and garlic in olive oil until fragrant.
- Add diced carrots, celery, bell pepper, and zucchini; cook for 5 minutes.
- Pour one cup of water and season with oregano, salt, and pepper.
- Simmer for 20-25 minutes until vegetables are tender.
- Garnish with fresh parsley and serve hot.

To prepare vegetable soup, diced onion, and garlic (a) _____ in olive oil until fragrant. Diced carrots, celery, bell pepper, and zucchini (b) _____ and cooked for 5 minutes. One cup of water (c) _____. It is then seasoned with oregano, salt, and pepper. It (d) _____ for 20-25 minutes until vegetables are tender. It is garnished with fresh parsley and served hot.

8. Choose the correct word from the options given below to complete the following passage. (1×3=3)

In the bustling city, Sarah (a) _____ (walk/walks/is walking/has walked) briskly to catch her bus. As she reaches the stop, she realises she forgot her wallet. She panics and runs back home, but by the time she returns, the bus (b) _____ (/ is left/had already left/has already left/ was left). Sarah (c) _____ (sighed/sigh/ sighs/ is sighing), feeling frustrated by her forgetfulness.

9. Do as directed.

(1×3=3)

- (a) She _____ have gone to the party if she hadn't been feeling sick. (Fill in the suitable Modal)
- (b) Walking through the forest I saw a deer it was a majestic sight. (Punctuate the given sentence correctly)
- (c) The teacher, along with the students, _____ (celebrate) the republic day. (Fill in the blank with correct verb that agrees with the subject)

Section C: (Literature)

(30 Marks)

10. Attempt **ANY ONE** extract out of the two given below.

(1×4=4)

With my expert assistance, he soon finished the chore;
Made her a tree-house with windows and a door.
So Granny moved up, and now every day
I climb to her room with glasses and a tray.
She sits there in state and drinks sherry with me,
Upholding her right to reside in a tree.

- (a) What does the phrase "Upholding her right to reside in a tree" suggest about Granny's character?
- (b) The repetition of 's' sound used in "She sits there in state and drinks sherry with me," is an example of
- A. Personification B. Metaphor
C. Alliteration D. Repetition
- (c) Complete the given statement with one word only.
The speaker climbing the tree top house with glasses, tray and sherry suggests his _____ relationship with Granny.
- (d) The poet's father needed his assistance to make the Tree top house. Identify the statement that DOES NOT fit the description of someone who requires 'assistance'.
- A. Lakshman played cricket for the first time today.
B. Samiksha has been teaching for the last ten years.
C. Srishti went for her first French class yesterday.
D. Gautam baked a second cake to improve his skills.

OR

Land of our Birth, our faith, our pride,
 For whose dear sake our fathers died;
 Oh, Motherland, we pledge to thee
 Head, heart and hand through the years to be!

- (a) Identify the emotions that the word "pride" evokes in relation to the Motherland.
- | | |
|-------------|----------------|
| A. Honour | B. Hospitality |
| C. Equality | D. Differences |
- (b) The extract mentions the _____ of the forefathers who died for the sake of their homeland.
- (c) What is the relevance of the words head, heart and hand used by the poet?
- (d) Choose the option that matches with the rhyme scheme of the extract.

Option 1	Option 2	Option 3	Option 4
help	play	sing	dance
care	tray	bling	glance
stare	assume	ink	glide
dare	shy	show	pride

- | | |
|-------------|-------------|
| A. Option 1 | B. Option 2 |
| C. Option 3 | D. Option 4 |

11. Attempt **ANY ONE** extract out of the two given below. (1×4=4)

That is what I thought. And why was she waiting about all that time if she intended to come in? Why did she bring us a cheap brooch to repair? Everyone knows that Regnier's has nothing to do with cheap trinkets and never does cheap repairs.'

- (a) Whom does 'I' refer to in the given extract?

(b) The reputation of Regnier's regarding repairs is that _____.

(c) Why did the woman's actions puzzle the narrator?

(d) How would you describe the narrator's attitude towards the woman's actions?

A. Doubtful

B. Thoughtful

C. Sympathetic

D. Impatient

OR

Winter: Shall I tell him, Briggs? One of us must do it?

Briggs: No, I'll do it. I'm the assistant manager. Well, sir, we think you ought to resign.

Mr. Hill: Resign? Leave the bank? What are you talking about? Is this a joke. Briggs?

Briggs: No, it isn't a joke.

Mr. Hill: Now one minute, please. It's Sunday afternoon. You come to my house and disturb me. Then you tell me... that I ought to resign.

Winter: We're very sorry, sir. We know it's Sunday. But we had to tell you.

Mr. Hill: But you can't do this. I'm the manager. You're only the assistant manager, Briggs. And Winter is only the cashier. You can't speak to me like this.

(a) Identify the setting of the conversation.

A. A bank

B. Mr Hill's house

C. A restaurant

D. The office

(b) Briggs insists on being the one to deliver the message to show that he was the _____.

- (c) Identify the feelings of Mr. Hill about being approached on a Sunday afternoon.



Option 1



Option 2



Option 3



Option 4

- (d) State the reason Briggs and Winter requested Mr. Hill's resignation.

12. Attempt **ANY SIX** short answer type questions out of the seven given below. [Word Limit: 30-40] (2×6=12)

- (a) The king forgave the bearded man. What did he do to show his forgiveness? (Three Questions)
- (b) The lady called the narrator a 'humourist'. Justify. (The Luncheon)
- (c) Enumerate instances of challenge and toil mentioned by the poet in the line "When life was challenge and toil". (My Mother)
- (d) Was Swami justified in thinking of himself as the worst perjurer on this earth, given the assistance he received from his father? Elaborate (Father's Help)
- (e) What was the final answer the king took for his question of the right time to begin something? (Three Questions)
- (f) What should be the chief concern of the whole mankind? What other concerns divert people's attention from this? (Couplets)
- (g) Why didn't Swami deliver the complaint letter to the headmaster after the school? (Father's Help)

13. Reflect on how the narrator's initial feelings of flattery and hospitality towards the woman at the beginning of their encounter in "The Luncheon" transform into eventual emotions of mortification and disgust, and consider the implications of this transformation. (Word Limit: 70-80) (4 Marks)

OR

How do the poems "My Mother" by Dr. Kalam and "Granny's Tree Climbing" by Ruskin Bond exemplify the respect for elders and the importance of acknowledging their wisdom and experiences?

(Word Limit: 70-80)

(4 Marks)

14. Imagine yourself as the king whose thoughts about life were changed after meeting the hermit. Write a diary entry expressing your feelings.

(Word Limit: 100-120)

(6 Marks)

OR

Imagine yourself as Swami. You represented a false picture of your teacher Samuel to your father which forced him to write a complaint letter against the teacher. Write a letter to your father confessing your mistake with a promise to never repeat this in future. (Word Limit: 100-120)

(6 Marks)